

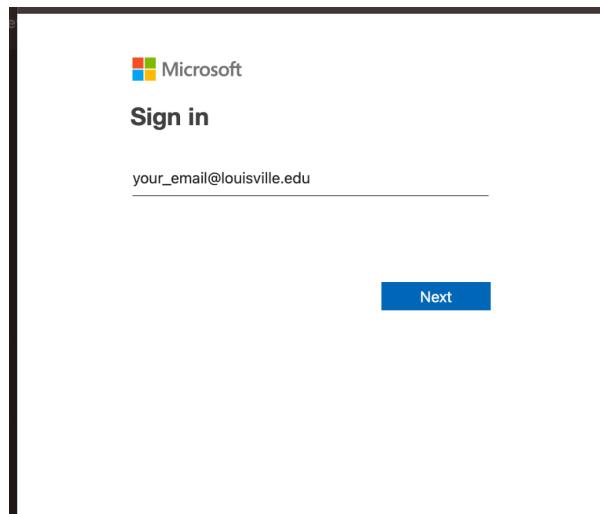
# Accessing MS Azure on a Web Browser

1. Open your preferred web browser

2. Insert the following link

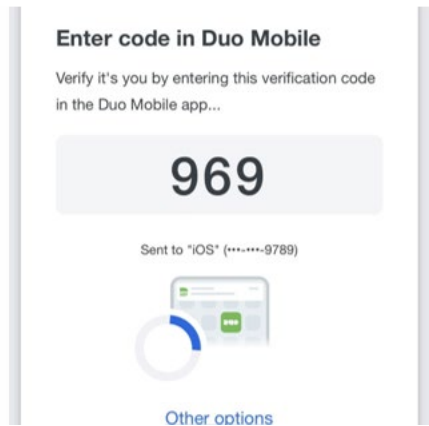
<https://client.wvd.microsoft.com/arm/webclient>

3. Type your UofL email (ex. [userID01@louisville.edu](mailto:userID01@louisville.edu)) in the “Email or phone” field and click next.

A screenshot of the Microsoft sign-in interface. At the top left is the Microsoft logo. Below it, the text "Sign in" is displayed. Underneath is a text input field containing the placeholder text "your\_email@louisville.edu". To the right of the input field is a blue button with the word "Next" in white text.

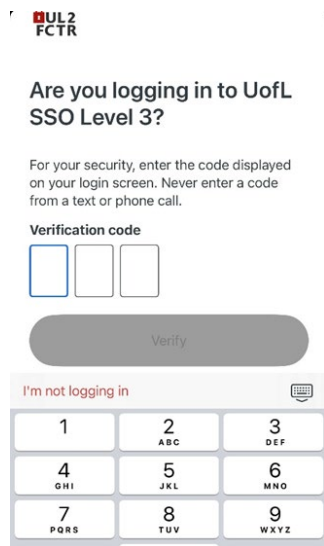
4. Type your UofL password and click **Sign In**.

5. Complete the Two-factor Authentication - DUO.  
(<https://louisville.edu/its/ul2fctr/>)



If a message appears asking you to update Chrome, select the option "skip for now".

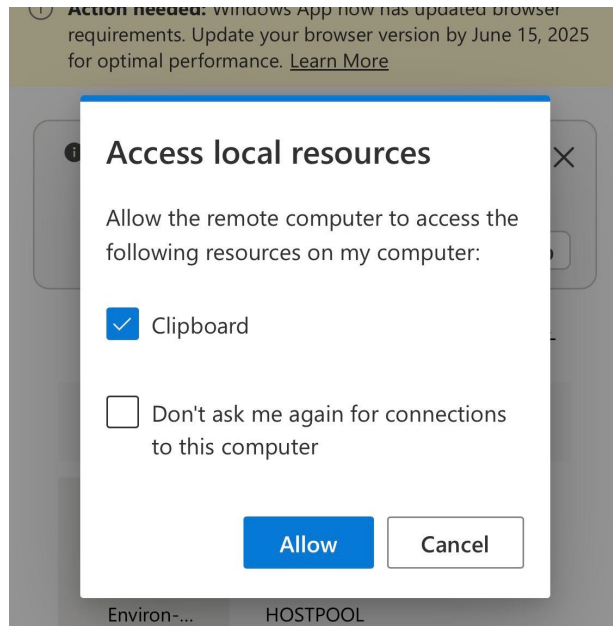
6. Open the message on your phone from Duo Mobile



Enter the code displayed on the computer into the app and click "Verify".

7. Double click on "COB Azure Environment"

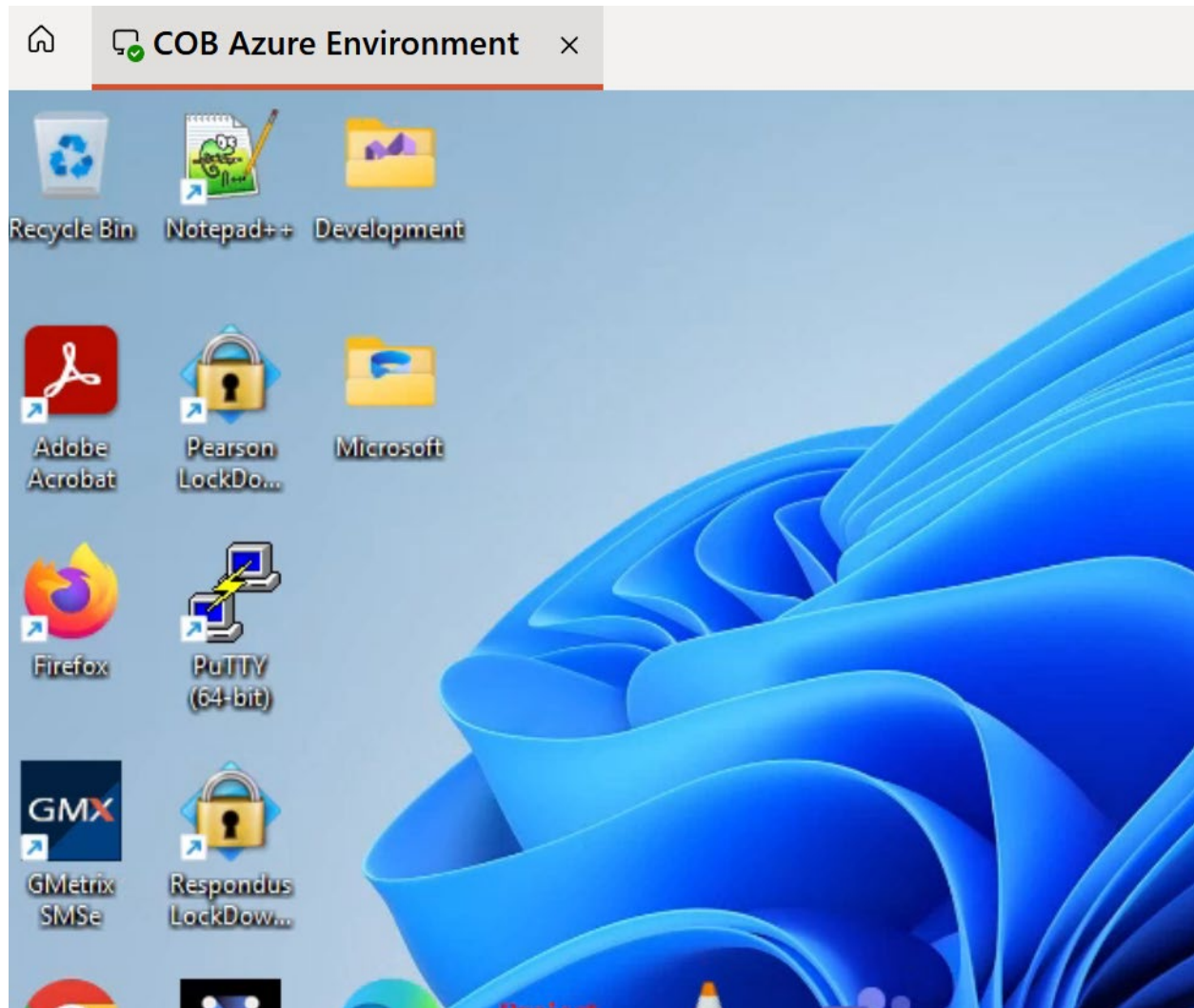
8. If you get a message saying "Access local resources" make sure the clipboard is checked and click "Allow".



9. Fill in your UofL user ID and UofL password.

A screenshot of a login form titled "Enter your credentials". It contains two input fields: "Username" with the text "userID01@louisville.edu" and "Password" which is currently empty. To the right of the password field is an eye icon for toggling visibility. At the bottom, there are "Submit" and "Cancel" buttons. The "Submit" button is currently disabled.

10. Congrats! You're in the virtual desktop of the COB.



Don't forget to sign out!