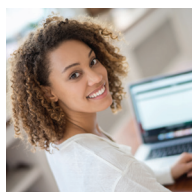


COLLEGE OF BUSINESS GRADUATE PROGRAMS GUIDE



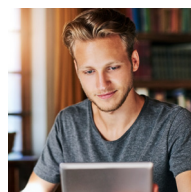
FULL-TIME MBA PROGRAM HIGHLIGHTS

business.louisville.edu/Full-Time-MBA

13-Month Program

\$32,000

- No GMAT required
- No pre-requisite courses required
- Competitive 11-month paid internships for qualified candidates
- Optional 10-day international study trip
- Capstone projects provide real-world experience
- Cohort and team-based format creates a high-quality, diverse learning environment
- Professional Development Modules include negotiations, communications, business etiquette, inclusive leadership, and crisis management
- Frequent guest speakers include successful alumni as well as regional and national business leaders
- World-class faculty includes teacher/scholars with extensive professional experience
- Professional career coaching with our Lifetime Career Support Promise



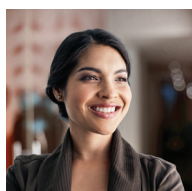
ONLINE MBA PROGRAM HIGHLIGHTS

business.louisville.edu/Online-MBA

20-Month Program (5 Semesters)

\$32,000

- No GMAT required
- Access coursework from anywhere in the world with 100% online classes
- Learn proven business theories, practices, and leadership skills to become a more engaged and effective business professional
- Develop vital business skills needed to lead teams and improve the bottom line
- Specialize your degree and use your electives to earn an online Franchise Management Certificate, or a Distilled Spirits Business Certificate at no additional cost!
- Optional 10-day international study trip
- Engage with world-class faculty who have extensive industry background and leadership experience
- Hear from business leaders, guest speakers, and successful alumni
- Professional career coaching with our Lifetime Career Support Promise



PROFESSIONAL MBA PROGRAM HIGHLIGHTS

business.louisville.edu/Professional-MBA

20-Month Program

\$32,000

- No GMAT required
- Convenient evening classes twice a week
- Online electives include earning a Franchise Management certificate or a Distilled Spirits Business certificate—at no additional cost.
- Professional development modules build professional soft skills that transfer readily between careers
- Optional 10-day international study trip
- Cohort and team-based format creates a high-quality, diverse learning environment
- Frequent guest speakers include prominent alumni as well as regional and national business leaders
- No pre-requisite courses required
- World-class faculty includes teacher/scholars with extensive professional experience
- Graduates enjoy the benefits of a highly respected degree and an international network of successful alumni
- Professional career coaching with our Lifetime Career Support Promise



INNOVATION MBA PROGRAM HIGHLIGHTS

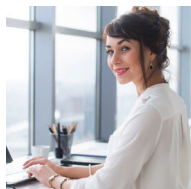
business.louisville.edu/Innovation-MBA

13-Month Program

\$32,000

- No GMAT required
- No pre-requisite courses required
- 30 credit hours in required core MBA classes
- 15 credit hours of innovation classes
- Unique innovation/entrepreneurship-focused in-class projects
- Hands-on, application-oriented learning, geared towards developing entrepreneurial skills
- Opportunity to participate in business plan competitions (optional)
- Optional 10-day international study trip
- Limited internship opportunities
- Frequent guest speakers include prominent alumni as well as regional and national business leaders, venture capitalists and entrepreneurs
- World-class faculty includes teacher/scholars with extensive professional experience
- Professional career coaching with our Lifetime Career Support Promise

COLLEGE OF BUSINESS GRADUATE PROGRAMS GUIDE



MASTER OF ACCOUNTANCY PROGRAM HIGHLIGHTS

business.louisville.edu/MAC

13-Month Program
\$25,000

- No GMAT required
- Learn high-level accounting primed for today's business world with courses and topics in data analytics
- Accounting internships are available
- Optional 10-day international study trip
- Becker CPA exam® preparation is included (a \$2,600 value). You can even sit for the CPA exam while still in the program
- Foster collaboration and develop leadership skills in this cohort-based approach
- Acquire outstanding technical knowledge in all major aspects of accountancy with a focus on analytical and professional sharp skills
- World-class faculty includes teachers with extensive professional experience in accounting and analytics
- Professional career coaching with our Lifetime Career Support Promise

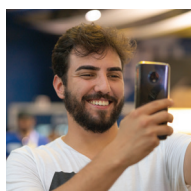


MASTER OF SCIENCE IN BUSINESS ANALYTICS PROGRAM HIGHLIGHTS

business.louisville.edu/UofLMSBA

13-Month Program
\$30,000

- No GMAT required
- Competitive 11-month paid internship for qualified candidates
- Learn analytic tools: Python, R, SAS, SAS Enterprise Miner, Tableau
- Gain analytics skills/techniques: Data mining, data modeling, data visualization, discrete choice modeling, machine learning, prediction algorithms, programming, statistical analysis, textual analysis, web scraping
- Graduate with both a Masters in Business Analytics and a SAS Data Analytics Certification
- Expert faculty who are experienced in the industry and in the classroom
- Professional career coaching with our Lifetime Career Support Promise



GLOBAL MBA PROGRAM HIGHLIGHTS

business.louisville.edu/Global-MBA

UofL tuition/fees: \$37,000
HHN tuition/fees: € 2,926

- Earn your MBA from UofL and a second degree (MSc in Business Management) from HHN for just 9 additional credits
- 10-month paid internship in Germany with Würth Industries or other business partners
- Pre-travel orientation prepares you for working/living in Germany
- Support while overseas including a local faculty advisor
- Experiential learning in China
- B.1 German-language level required
- No GMAT required
- Scholarships available — speak with recruiters today

AMBASSADOR NEXT STEPS:

Document and forward your interaction to Stephen.Swan, Recruiter
Stephen.Swan.1@louisville.edu
(502) 852-1785

STUDENT PROSPECT NEXT STEPS:

Direct students to apply at Business.Louisville.edu/Apply
Questions? Contact Stephen Swan
Stephen.Swan.1@louisville.edu
(502) 852-1785

UNIVERSITY OF
LOUISVILLE®

COLLEGE OF BUSINESS